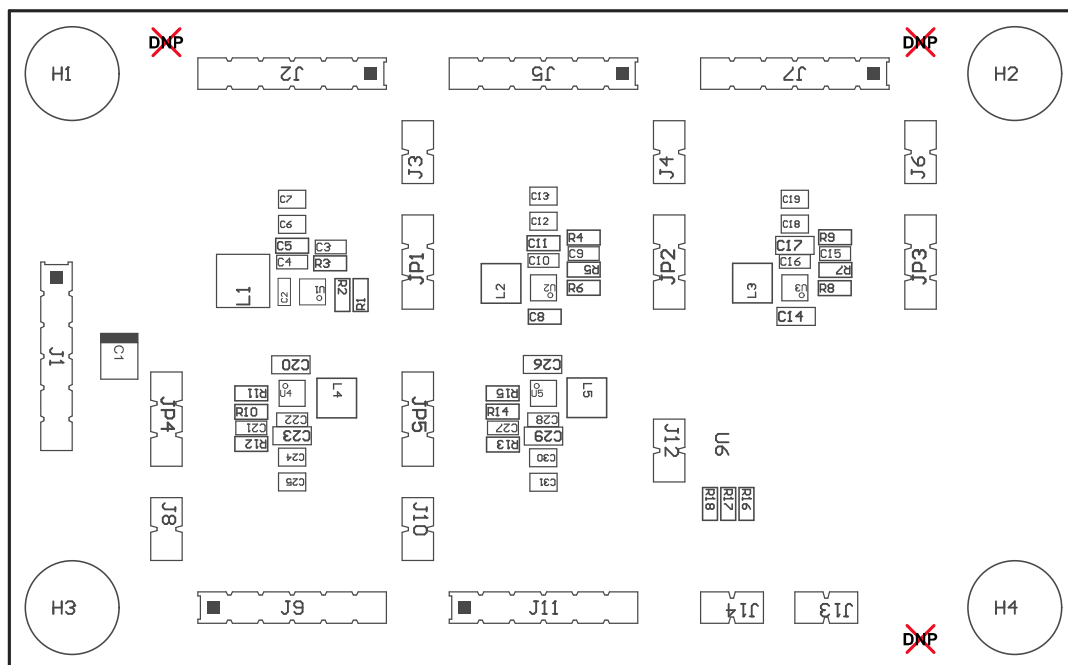


Z24 ■ These assemblies must comply with workmanship standards IPC-A-610 Class 2, unless otherwise specified.



COMPONENTS MARKED 'DNP' SHOULD NOT BE POPULATED.  
ASSEMBLY VARIANT: 001

PCB VIEWED FROM TOP SIDE	BOARD #: TIDA-01416	REV: A	SUN REV: Not In VersionControl
	TID #: TIDA-01416		
PLOT NAME = Top Assembly Drawing	GENERATED : 1/10/2018 12:32:06 PM		TEXAS INSTRUMENTS



COMPONENTS MARKED 'DNP' SHOULD NOT BE POPULATED.  
ASSEMBLY VARIANT: 001

PCB VIEWED FROM BOTTOM SIDE	BOARD #: TIDA-01416	REV: A	SUN REV: Not In VersionControl
	TID #: TIDA-01416		
PLOT NAME = Bottom Assembly Drawing	GENERATED : 1/10/2018 12:32:07 PM		TEXAS INSTRUMENTS